



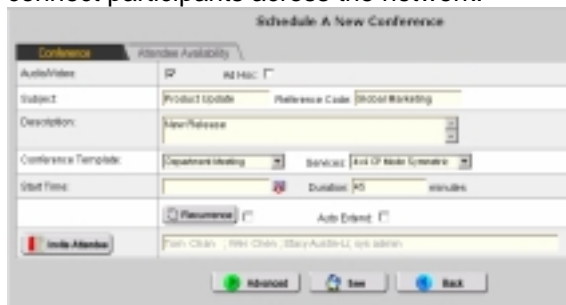
# Video Communication Scheduler

## VCS 3.0

**The Video Communication Scheduler (VCS)** provides a centralized browser interface for scheduling and managing video communication resources within your organization. The VCS increases the quality of the rich media experience by simplifying scheduling, resolving conflicts, and ensuring necessary resources will be available when the meeting starts. For administrators, VCS reduces the costs and complexity associated with adding new services or locations, transitioning from ISDN to IP, and integrating video communications into the workplace environment.

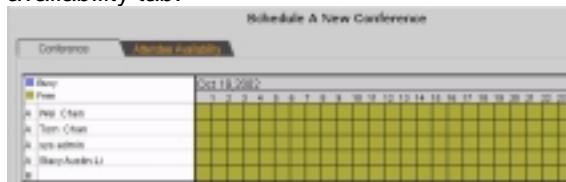
### VCS Scheduling and Notification

Now setting a video appointment is no more complex than setting a meeting via your groupware. Set the time and subject, choose a service from the list, and invite attendees. Personalized templates make it easy to save your most frequently used settings. When the conference time arrives, VCS will automatically connect participants across the network.



### Attendee Availability & Conflict Notification

VCS will notify the organizer of any attendee, room, or terminal conflicts to be resolved when the conference is scheduled. Any attendee or room conflicts can also be checked before scheduling by clicking on the attendee availability tab.

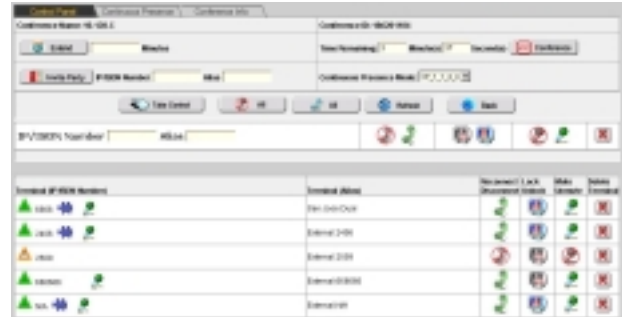


### Conference Notification and Management

All conference participants are notified by email of the date, time, and topic of the event. In addition, they can log on to VCS to accept or request a change in the conference arrangements.

### VCS Conference Control Panel

During conferences, the control panel window allows the conference creator seamless control of conference features on one screen, regardless of the number of MCU's employed. Dynamically add new participants, disconnect or reconnect endpoints, change screen layouts, and extend the conference.



### Network Administration

#### Manage Services, Not Devices

VCS Service Templates allow administrators to define the services offered for users. By selecting bandwidth, continuous presence, data conferencing and other settings, administrators can remove technical barriers and have better control over the network.

Active Template	Inactive Template	
Template Name		Description
<input type="checkbox"/>	Small Group Discussion	4x4 CP Mode Symmetric at 174
<input type="checkbox"/>	Interactive Training	13 Screens CP Mode Symmetric (any layout)
<input type="checkbox"/>	Group Discussion	7 Screens CP Mode Symmetric (any layout)
<input type="checkbox"/>	Executive Conference	4x4 CP at 384 with data
<input type="checkbox"/>	Audio Conferences	Audio Only

#### Resource and Capacity Management for Quality Conferencing.

VCS network mapping defines physical network topology including devices, network connections, and bandwidth available for video conferencing between any two routers. VCS uses this information to simulate traffic flows, device usage, and bandwidth consumption at any given moment on the network, ensuring that all the necessary resources are available for any given conference at the scheduled time. The VCS then allocates the most appropriate MCU and Gateway resources for the conference based on MCU capability, delay, bandwidth, and terminal distribution considerations, automatically cascading MCU's when necessary.

## Features and Functionality

### User Administration

Manage user Profiles:

- Name and password
- Login ID
- Role
- Time Zone
- Default Terminal
- Groups

Role determines who can

- Schedule meetings
- Perform In Meeting Control Functions
- Maintain Service Templates
- Manage Network Devices

### Scheduling & Notification

Conference Scheduling:

- Browser based scheduling
- Single point access for scheduling across all MCUs
- Ad hoc and Scheduled Meetings
- Audio, Video, and Regular Meetings
- Recurring Meetings
- Auto Start/End
- Dial-in or Dial-out
- Real – Time conflict notification
- Attendee Availability Check

Conference Templates save settings for

- Attendees and Terminals
- Services

Email Notification Providing:

- Conference Start/End Time
- Conference Name
- Participants and Time zones
- Conference ID
- Gateway Dial In Numbers
- Conference ID for Dialing

### Conference Control and Monitoring

Conference Monitoring

- View Conference List
- View Conference Details
- Accept, Decline, Request a Change
- Access In-Meeting Controls

In-Meeting Controls

- View attendance and status list
- Add and drop terminals on the fly
- Reconnect and disconnect terminals
- Allow dial-in participants
- Change screen layout
- Mute and disable mute for participants
- Mute all participants
- Extend the conference
- Lock a specified attendee in view

### Resource & Capacity Management

Service Templates define

- Screen Layouts
- Bandwidth
- Frame Rate
- Video Format
- Audio Format
- T.120
- Symmetric or Asymmetric
- Audio or Video

Resource Management defines

- Node location and connection bandwidth
- Network device location and capacity
- Terminal location and connection speed

MCU and Gateway Port Auto Selection Based On:

- Service Support
- Nearest Port Hunting
- Automatic Cascading
- Threshold Based Port Hunting
- Load Balancing
- Least Cost Routing

Multi-Gatekeeper Environments

- Flat and Hierarchical Dial Plan Support
- Gatekeeper Based Firewall Solutions

## System Requirements:

**Server OS**

Windows 2000/NT, Unix, or Linux

**Server Hardware**

Pentium III 733 MHz processor, 512 MB RAM, 100 MB free disk space

**Database**

Microsoft SQL Server 2000 or MySQL 4.08+

**Web Client OS**

Windows 98, NT, 2000, or Me

**Web Client Browser**

Microsoft Internet Explorer 5.5+